

Killingholme Power Station



Client

ABS Pumps Ltd for
Centrica KPS Ltd

Value

£69,000

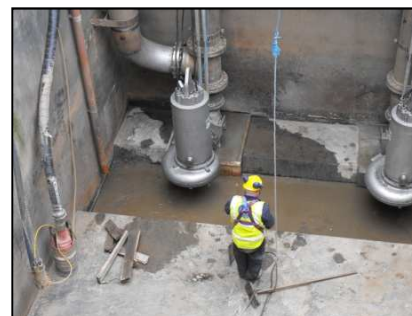
Completion

May 2010



Site Electrical were contracted by ABS Pumps to install new submersible pumps in 3 pumping stations at Centrica's Power Station at Killingholme on Humberside. The planned outage, which lasted only 17 days, included the removal of the existing Weir pumps and the full M&E installation of the new ABS pumps. The submersible guide rails were stainless steel with the pumps and stools being manufactured to a special marine grade for pumping sea water. The largest pumps on the scheme were the Make Up pumps, which pump water from the river Humber to the Power Station, weighing 3.6 Tonnes each.

- 2 No. 250Kw Make up pumps with 400mm pipework
- 2 No. 55Kw Purge pumps with 300mm pipework
- 1 No. 15kw Blow down pumps with 300mm pipework



Site Electrical Ltd. Tel: 0161 725 5555

